



SAFETY & ACCESS CONTROL SOLUTIONS

PROTECT YOUR EMPLOYEES

**Master
Lock®**

WHAT IS LOCKOUT / TAGOUT ?

Every year, thousands of accidents occur during maintenance and repair of industrial machines and equipment. Most of them are caused by non-neutralized energy sources!

Lockout or LOTOTO («Lock-Out», «Tag-Out», «Try-Out») consists in isolating the energy sources of the different machines of a plant. This ensures the safety of the operators during the maintenance operations.

Hazardous energy for employees can come in many forms:



Lockout involves not only the installation of a lockout padlock, device, and tagout, but also ensuring that the equipment cannot be operated until the lockout device is completely removed.

THE MOST IMPORTANT STEPS OF LOTO

Master Lock advises on a 7 step process to implement the right Lockout Tagout program



OUR COMMITMENT TO THE ENVIRONMENT

Master Lock is committed to the environment and uses a new hot injection process to mold the body of our lockout padlocks. This process reduces our metal waste and we recycle 14 tons of polyethylene and approximately 6,500 tons of metal each year!

A number of Master Lock Products have been **UL Environment validated** for recycled content.



MASTER LOCK 1100
SERIES : A1105, A1106,
A1107, A1165, A1166,
A1167, S1105, S1106,
S1107 CONTAIN A
MINIMUM OF 68%
RECYCLED CONTENT
UL.COM/ECV



MASTER LOCK S31
SERIES : S31 AND S31LT
CONTAIN A MINIMUM OF
55% RECYCLED CONTENT
UL.COM/ECV



MASTER LOCK 406
SERIES : 406 CONTAIN
A MINIMUM OF 45%
RECYCLED CONTENT
UL.COM/ECV



MASTER LOCK 410
SERIES : 410 AND 410LT
CONTAIN A MINIMUM OF
60% RECYCLED CONTENT
UL.COM/ECV



MASTER LOCK 411 SERIES :
411 AND 411LT CONTAIN A
MINIMUM OF 48% RECYCLED
CONTENT UL.COM/ECV



IDENTIFICATION

MAINTENANCE TAGS

Do not operate safety maintenance tag, english, 1 bag with 100 tags



S297

Master Lock tags are available in several languages, contact us for availability

TAGS

Do not operate" laminated tags, English/ French (Pack of 6 tags)

Polyester coating: water resistant, grease and extreme temperatures

497ABLC



LOCKOUT HASPS : GROUP LOCKOUT

LOCKOUT HASPS

Safety hasps accommodate multiple lockouts on the same equipment



428

Non-conductive hasp



420

Steel hasp

LOCKOUT BOXES

Perfect solution for shift work with staggered hours or subcontracted operations



498A
Portable



503RED
Wall mounted or portable



S3650
Portable with wall mounting bracket

PERMIT CONTROL BOARD

The permit display board provides the function of three products into one device

- Paperwork display: Presents and protects work permits and other procedure documents
- Group Lock Box: Isolates and secures equipment keys when group lockout procedures are underway
- Storage box: Stores equipment locks
- The modular design allows the paperwork display and the lockbox to be mounted and used separately



S3500



ELECTRICAL LOCKOUT

CIRCUIT BREAKER LOCKOUT



S2390 / S2393 / S2394

- Compact and universal
- Fast and easy to install - no tool required



For more info



491B

491B / 493B

- Ideal to lockout larger circuit breakers
- Exist in 2 sizes (493B)



For more info



S3821

S3821 / S3822 / S3823

Easy to use and adapted to all types of circuit breakers



CABLE LOCKOUT




- Dielectric nylon core retractable cable lockout device
- Ideal for electrical applications
- 2,74m cable x 3,3mm diameter



S866



 Suitable for use in explosive atmospheres

LOCKOUT BAGS

Lockout bag for remote control or electrical connector

- Prevents equipment from being reactivated
- Nylon bag available in 2 sizes
- Offers multiple applications



453L - 453XL

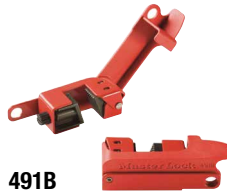
More products on www.masterlock.eu

MECHANICAL LOCKOUT

ADJUSTABLE CABLE LOCKOUT

Tough and flexible cable, perfect for any lockout application :

- handwheel valve : Cable only (S806 ou S856)
- Quarter-turn valve : Cable (S806 or S856) + 491B



491B



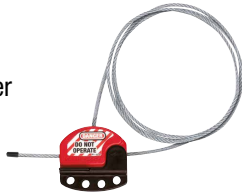
For more info



S806



- 1,80m standard cable x 4mm diameter (customizable from 0,9 to 15m)



S856



- Patented retractable system for easy use
- 2,7m cable x 3,3mm diameter

ADJUSTABLE BALL VALVE LOCKOUT



S3080 (4 legs) / S3081 (2 legs)



Adjustable device to fit a variety of ball valves and pipes

BUTTERFLY VALVE LOCKOUT



S3920



Unique and patented adjustable design to fit any sizes of butterfly valves

- Compact and easy to use
- Thermoplastic construction to withstand the toughest environments

GATE VALVE LOCKOUT



480 - 481 - 482 - 483 - 484



Surrounds valve operating handle, protecting against accidental valve opening

- Lightweight and robust
- Resistant to high temperatures and chemicals



BLIND FLANGE LOCKOUT

Best solution for pipeline maintenance

- Fully conceals flange bolts to prevent from removing the blind
- Durable aluminum and hardened steel construction withstands tough conditions
- Four locking holes allow for multiple workers to lockout device at one time

S3922

Available in 3 sizes

All mechanical lockout devices can be used with Master Lock padlocks and tags



Suitable for use
in explosive atmospheres

More products on www.masterlock.eu

SAFETY PADLOCKS

Master Lock's safety padlocks have been specially developed to meet OSHA requirements as well as all the needs of safety professionals: for electrical, mechanical, valve lockout, in extreme environments... we have the padlock you need!

CONFIGURE YOUR PADLOCK TO YOUR SITE'S NEEDS

LifeGuard KEY TRACEABILITY

With LIFE GUARD, Master Lock provides free key tracking to prevent duplicate keys from being introduced on site and putting your lockout procedure at risk.

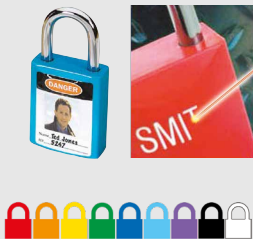
PADLOCK IDENTIFICATION

Master Lock offers services to customize padlocks which provide quick and easy identification.

Labels: Write worker's name, add photo I.D, department, division or shift number

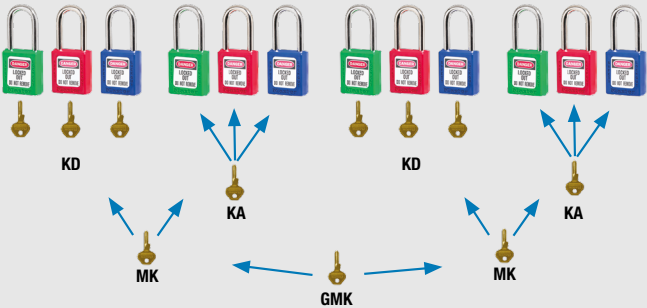
Laser engraving: Engrave the key number, your logo or any identifying information on the body of the lock!

Colors: Choose up to 9 body colors



KEY SYSTEM

Establish a safe and convenient locking system that would fit your lockout procedure needs.



KD-Keyed Different: One key opens only one padlock

KA-Keyed Alike: One key opens all locks within the same group

MK-Master Keyed: One key opens all padlocks within one group KD or KA

GMK-Grand Master Keyed: One key opens all padlocks across several groups KD, KA or MK

THERMOPLASTIC

- Lightweight thermoplastic body: Resistance to chemicals, moisture, UV and to extreme temperatures (-40°C and +90°C)
- 6-pin cylinder: Over 40,000 possible key combinations
- Comes with 1 key: Complies with the «1 lock = 1 key = 1 employee» directive
- Key Retention System (except S32 and S33): Ensures that the lock cannot be accidentally left unlocked
- Identification label included
- 9 colors of your choice

For
electrical
lockout



For
mechanical
lockout



ALUMINIUM

- Durable aluminium body : Resistance to extreme environments, corrosion
- Anodized material: Suitable for use in the food industry
- 6-pin cylinder: Over 40,000 possible key combinations
- Comes with 1 key: Complies with the «1 lock = 1 key = 1 employee» directive

- Key retention system: Ensures that the lock cannot be accidentally left unlocked
- 3 shackle heights available: Can be adapted to all applications
- Identification label included
- 9 colors to choose

For
mechanical
lockout



MAXIMUM PADLOCK PROTECTION

For extreme environments, optional guards are available for all Master Lock or American Lock padlocks



Suitable for use
in explosive atmospheres

More products on www.masterlock.eu

LOCKOUT DEVICES

KITS AND STORAGE STATIONS

KITS

Two kits available, with all the essential products for your safety operations.



ELECKIT-EN
Electrical lockout kit



MAINTKIT-EN
General maintenance kit

CUSTOM KITS

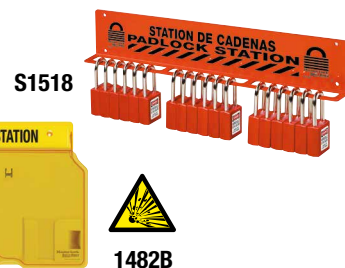
You can also build kits with your choice of lockout padlocks and accessories. Please contact your local Safety distributor for more information.



STATIONS

Offer the ultimate storage space for large facilities or multiple departmental use

- Durable construction
- Some models can hold up to 20 padlocks



eLOTO

SOFTWARE FOR LOTO PROCEDURES

Use Master Lock eLOTO to make your work environments safer

Writing LOTO procedures can be complex and time consuming. Master Lock eLOTO is an easy-to-use software program that allows you to easily create your lockout procedures and permits, and implement an effective lockout program.



ACCESS CONTROL



Complete, flexible and non-binding solution for efficient user and access control.

USER FEATURES

Unlocking via Smartphone (Bluetooth) or manual code

ADMINISTRATOR FEATURES

- Remote access sharing, permanently or temporarily
- User management (permanent or temporary)
- Device location
- History of unlocking
- SDK/API module available for integration



4400EUREC
Padlock for indoor use



4401EURLHEC
Padlock for outdoor use
IP 54



6400EURLJENT
ProSeries Padlock
Enhanced security
IP 56



5441EUREC
Secure key storage
IP 55



5440EUREC
Secure key storage, with a shackle
IP 54



Master Lock

More information on www.masterlock.eu
Contact: safetyeu@mlock.com
Tel: +33 1 41 43 72 00

